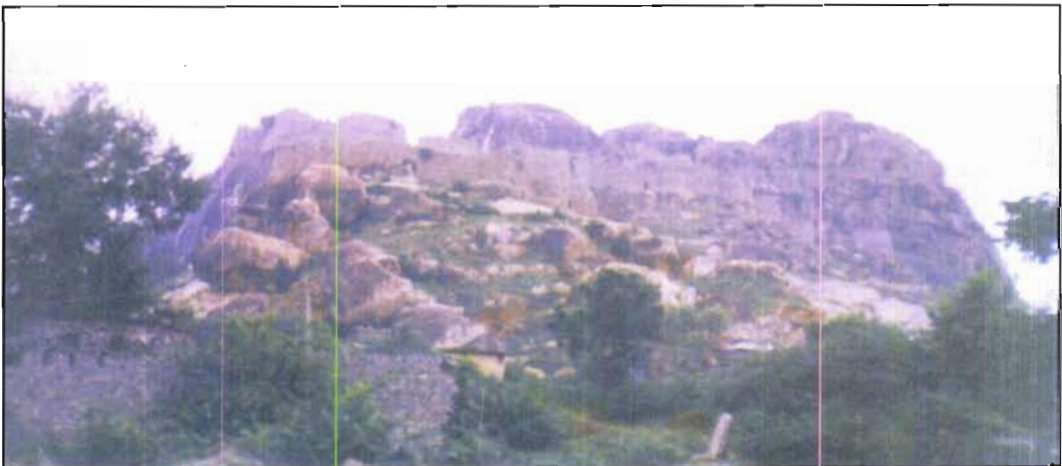


Fort, Shahpur



Budha in Nature, near Shahpur



Fort, Yadgiri



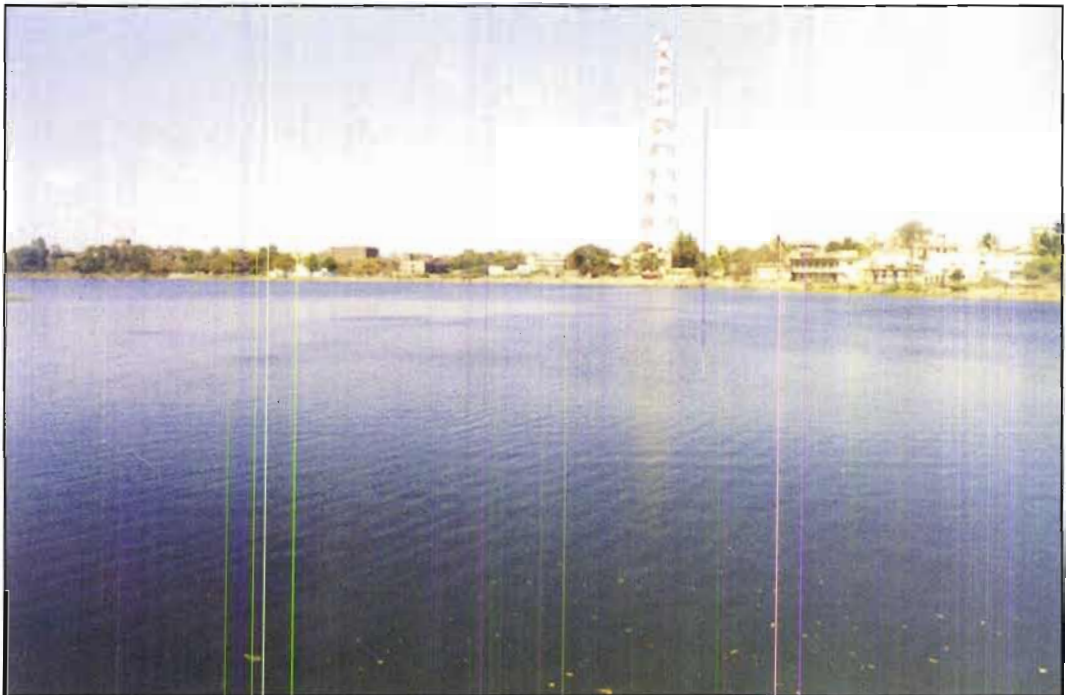
The Krishna river near Chaya Bhagavati



The Bhima river near Anabi



Tank, Yaragol



The Sharanabasaveshwara Tank, Gulbarga



Sunflower Crop



Tur Crop



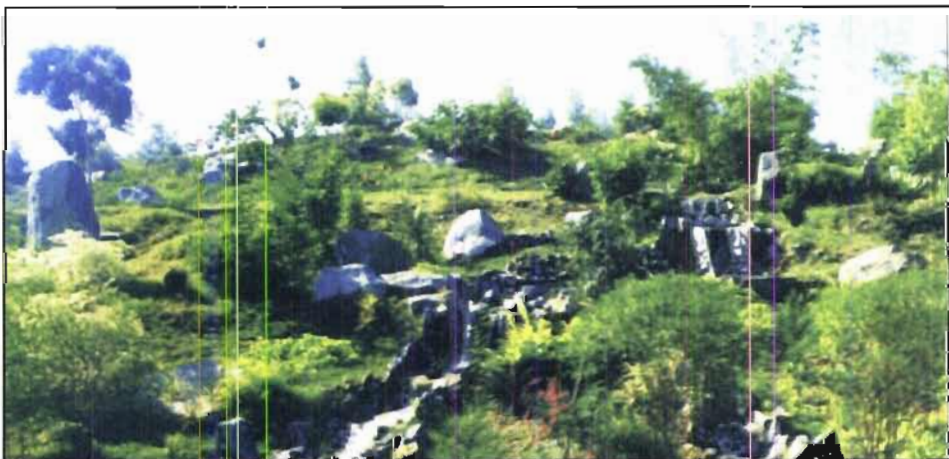
Bajra (Sajje) Crop



Corporation Park, Gulbarga



Science Centre, Gulbarga



Park, Rajashri Cement factory, Malkhed



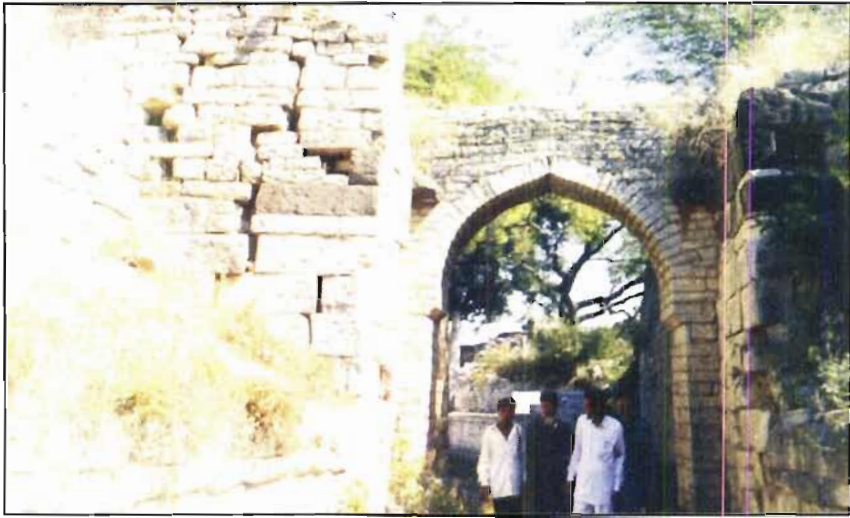
Megalithic Tombs, Rajan Koluru



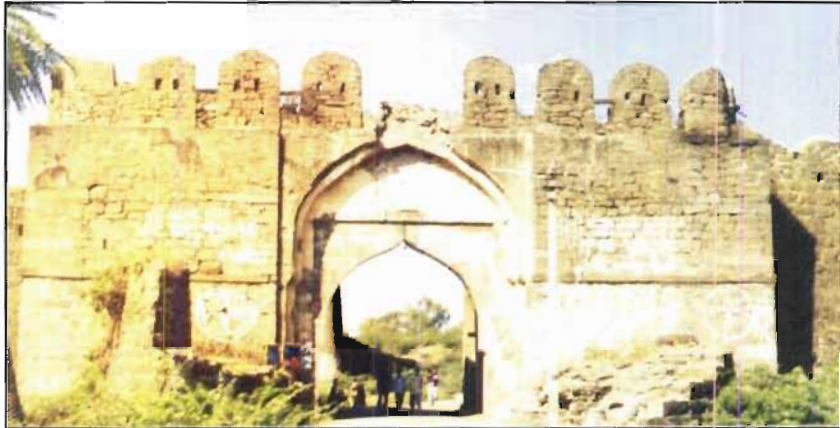
Grainery like remains, Ranamandala area, Sannati



Excavated Structural Ruins, Ranamandala area, Sannati



Fort, Malkhed



Fort Entrance, Gulbarga



Fort, Gulbarga





Palace, Surapur



Surapur king Venkarappa Nayaka



Sanad issued by Aurangzeb to the Surapur King with his Palm impression

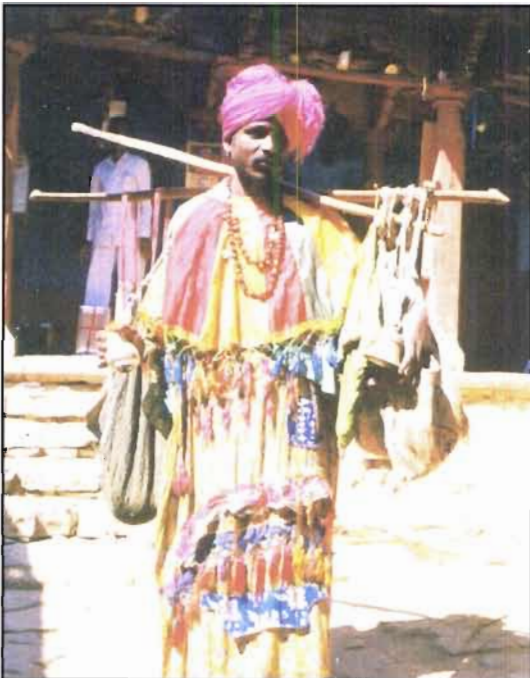




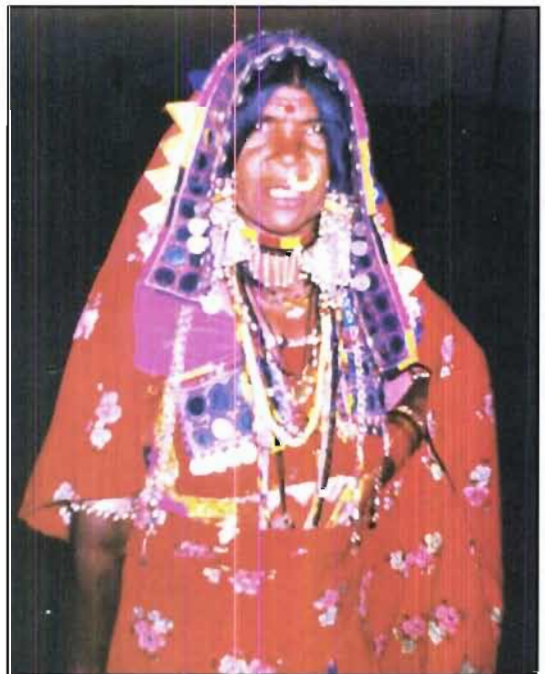
Puravantaru



Jogiti, a devotee of Yallamma



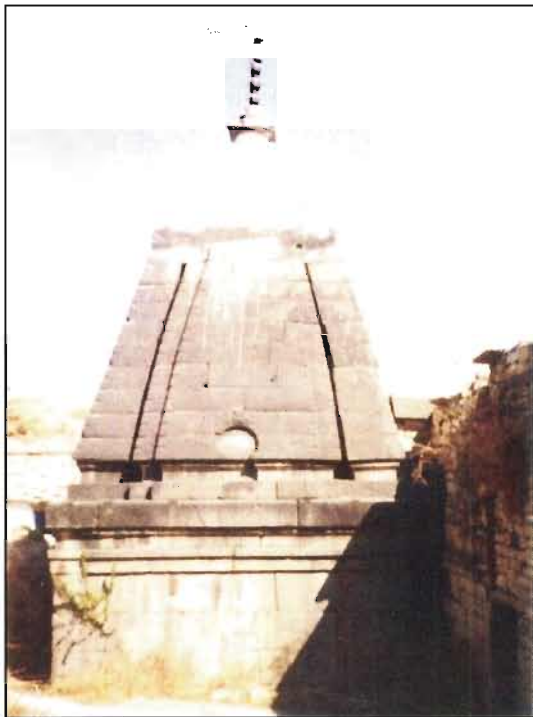
A devotee



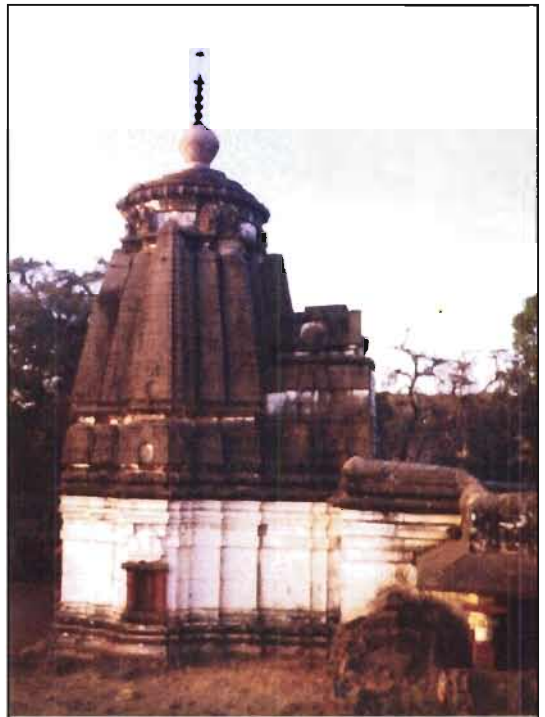
A Lambani woman



Fort, Waghangeri



Bhogalingeshwara Temple, Rajapura



Ramalingeshwara Temple, Mogha



A Buddhist Plaque, Sannati



Mahaveera, Gulbarga Museum



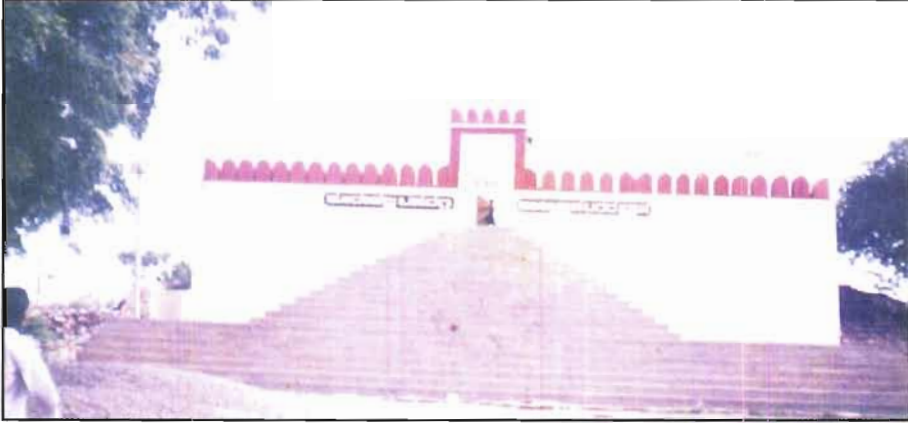
Naga Sculpture, Gulbarga Museum



Sharanabasaveshwara Temple, Gulbarga



Mouneshwara, Tinthini



Pete Basavanna Temple, Kodekal



Virakta Matha, Gurmathkal



Madivalappa Temple, Kadakol



Glass Paintings (Gulbarga University Collection)



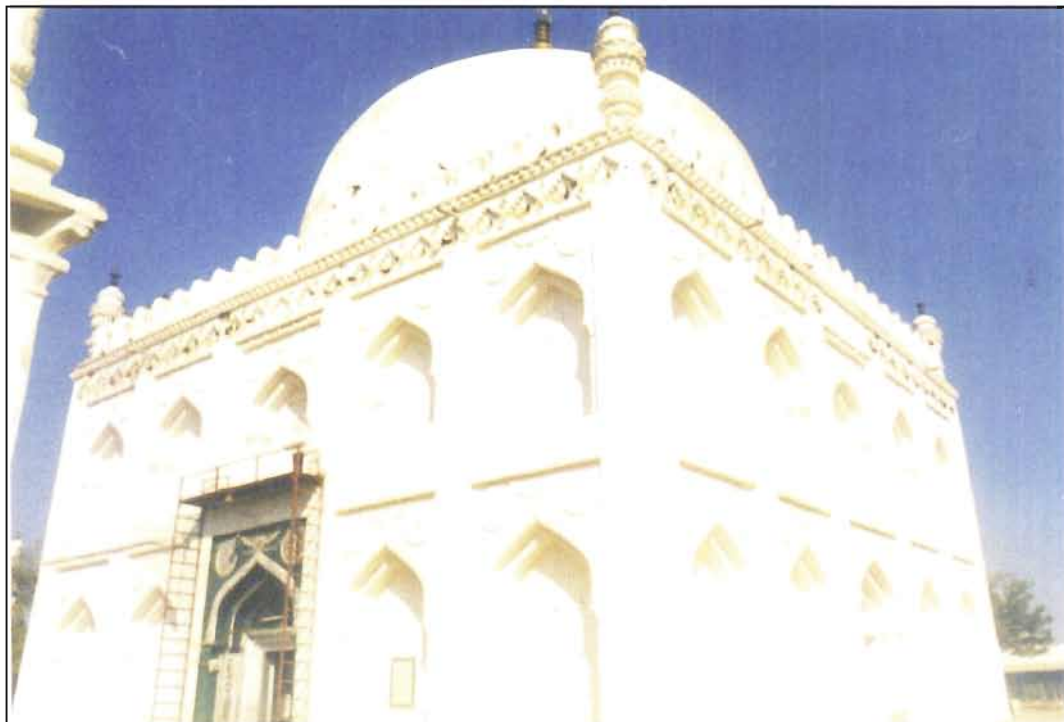
Wall Paintings, Shivashankaradevara Matha, Sedam



Vikas Bhavan, Gulbarga



Gulbarga University, Gulbarga



Khwaja Bandenawaz Dargah, Gulbarga



Fatima Sultan's Gumbaz, Gogi



Church, Gulbarga





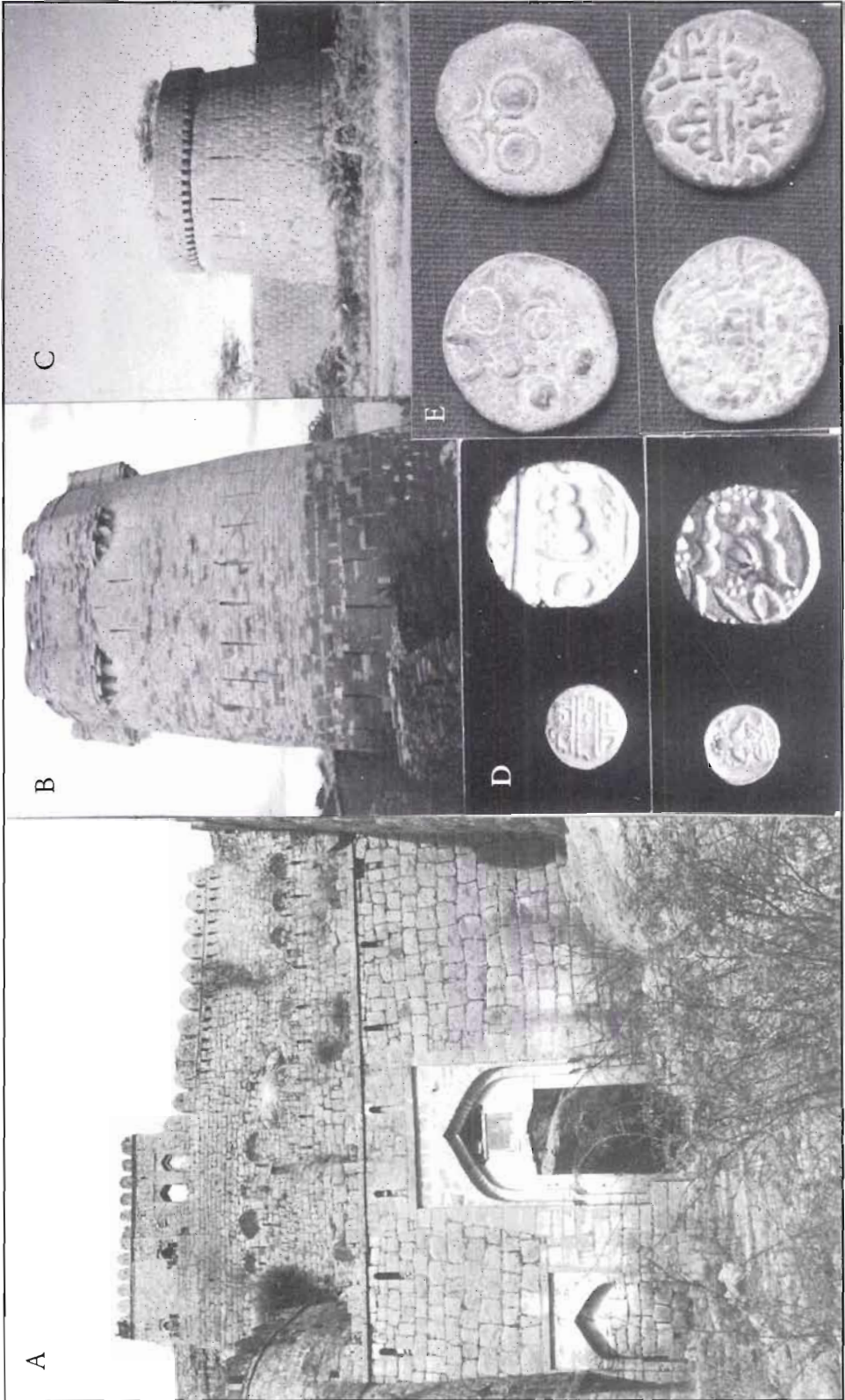
Water Falls, Gurmathkal



Water Falls, Chaya Bhagavati near Narayanapur



Amarja Dam near Korahalli



A

B

C

D

E

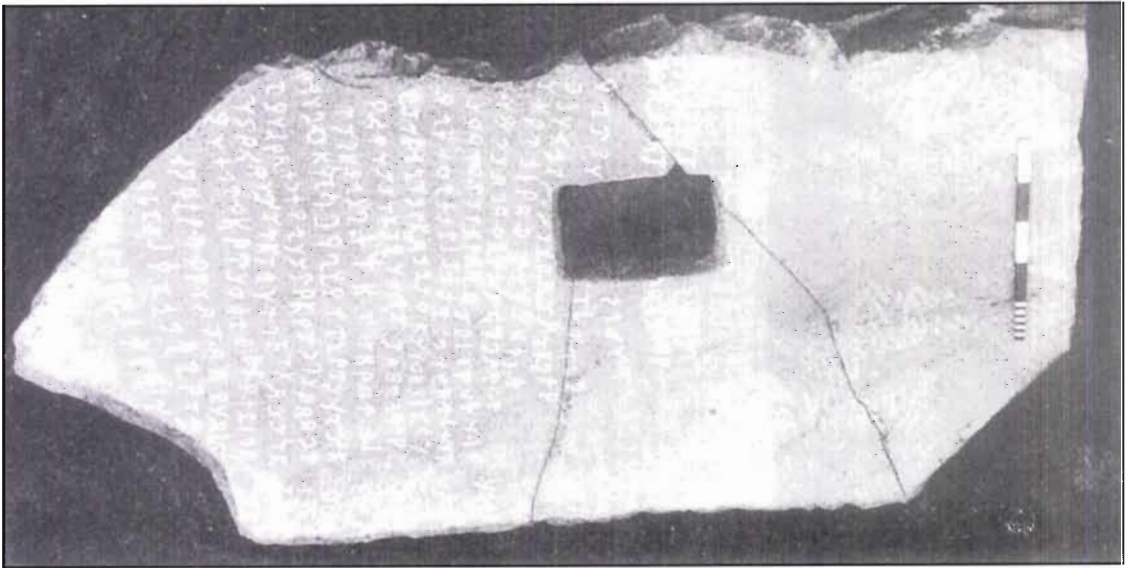
A. Citadel, Shahapur

B. Warch Tower, Avaradi

C. Fort, Chinmali

D. Old Coins

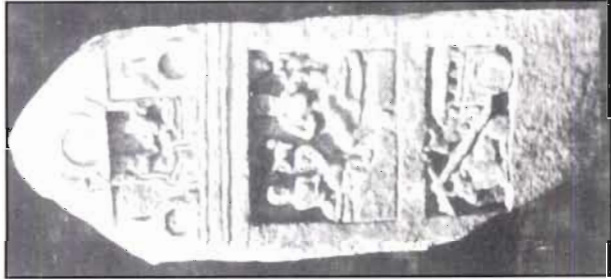
E. Lead Coins of Gautamiputra Satakarni



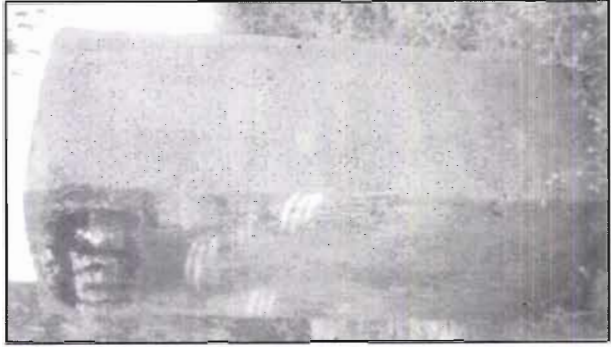
Ashokan Inscription, Sannati



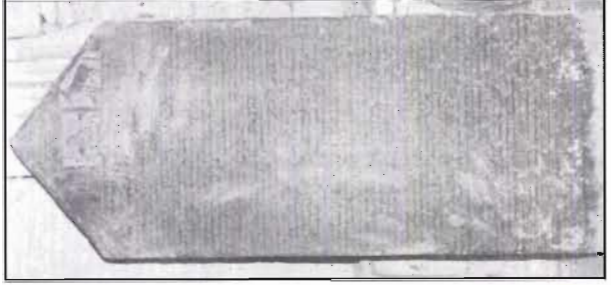
Sketched Plaque (1st Century A.D.), Kalagi



Shatavahana Memorial Stone,  
Jevatgi



A 11th Century Inscription,  
Bingoli



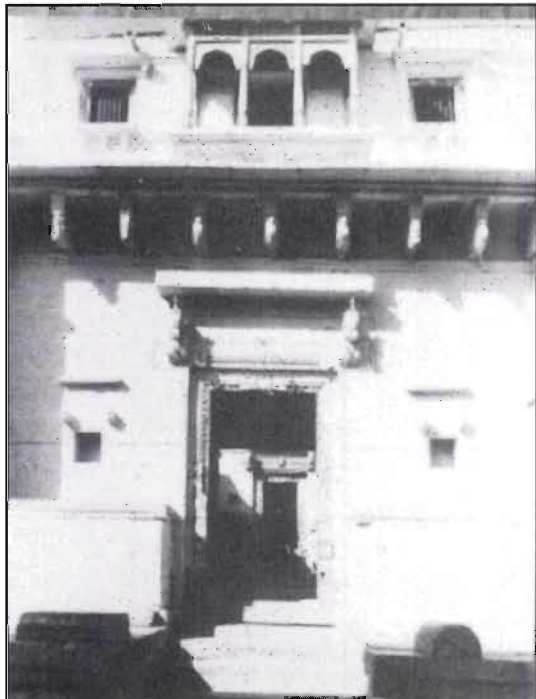
Maratur Inscription of  
Vighnateshwara



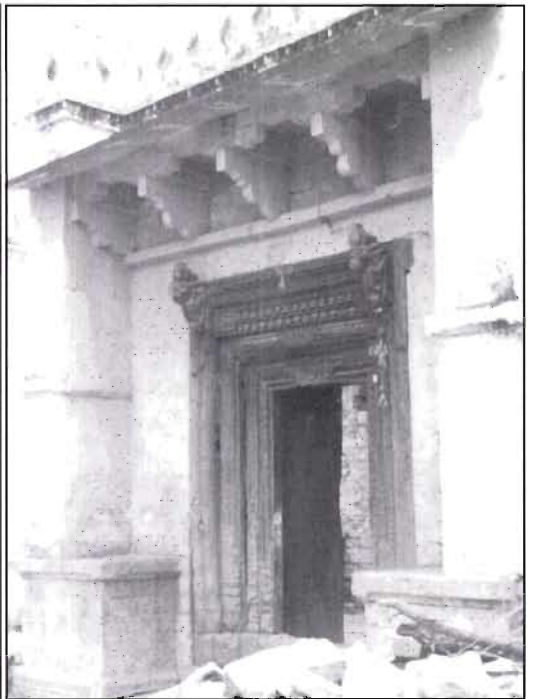
Door Jamb, Nageshwara Temple, Kulageri



Door Jamb, Jaina Temple, Nelogi



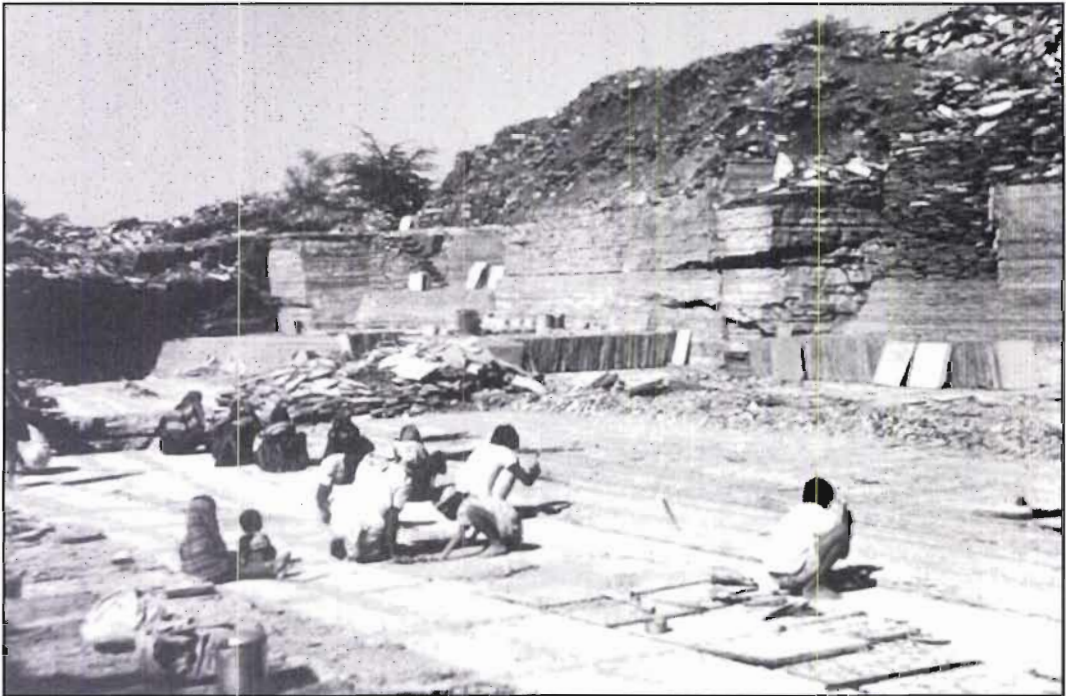
Doorway of an old Wada, Honna Kiranagi



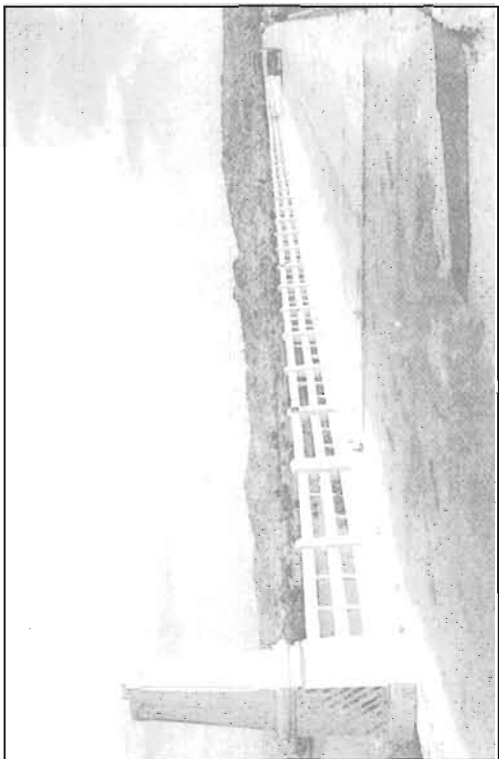
Doorway of an old House, Shahpur



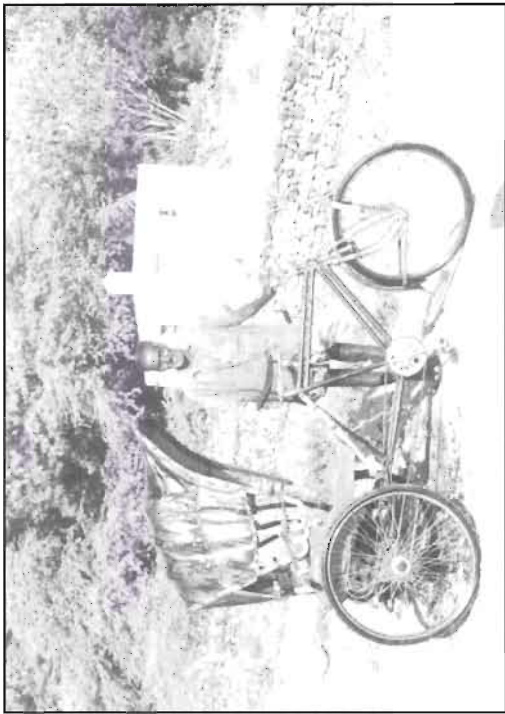
Rajashree Cement Factory near Malakhed



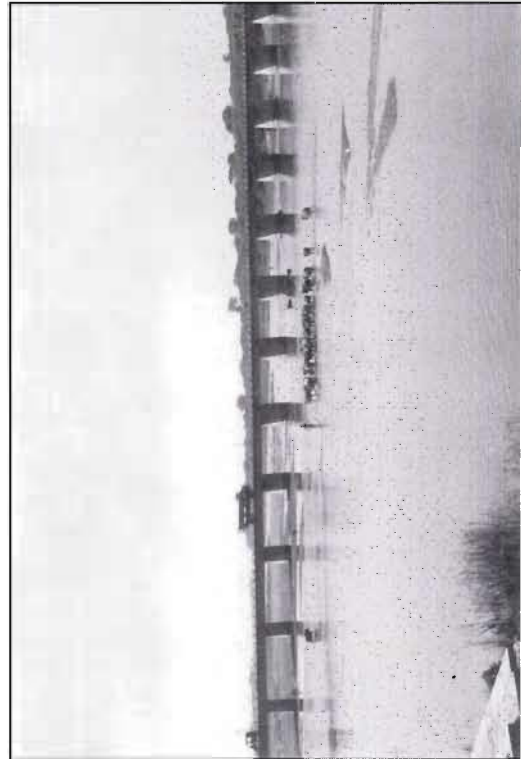
Quarrying near Shahabad



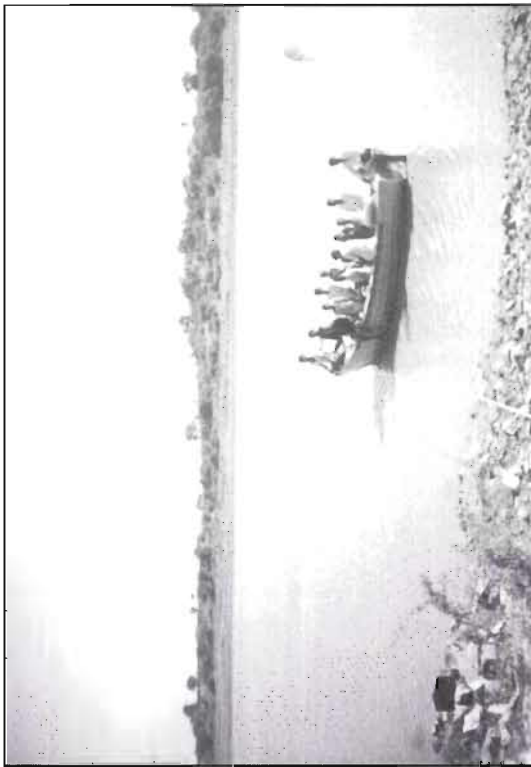
Bridge across the Krishna river near Tinthini



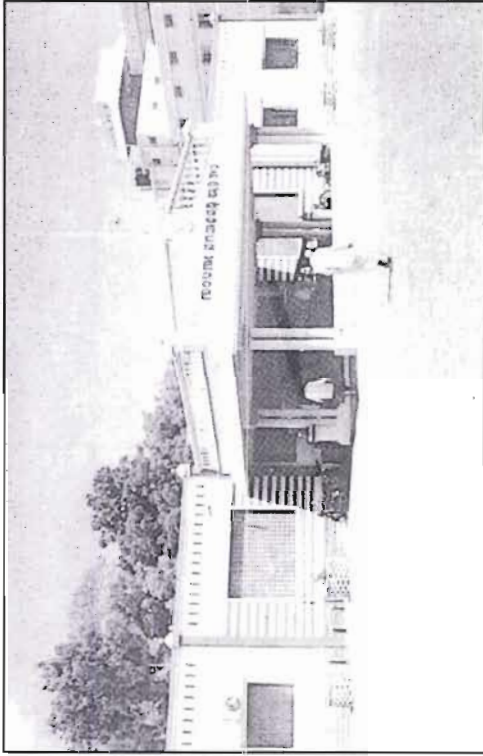
Cycle Riksha, Common man's Transport



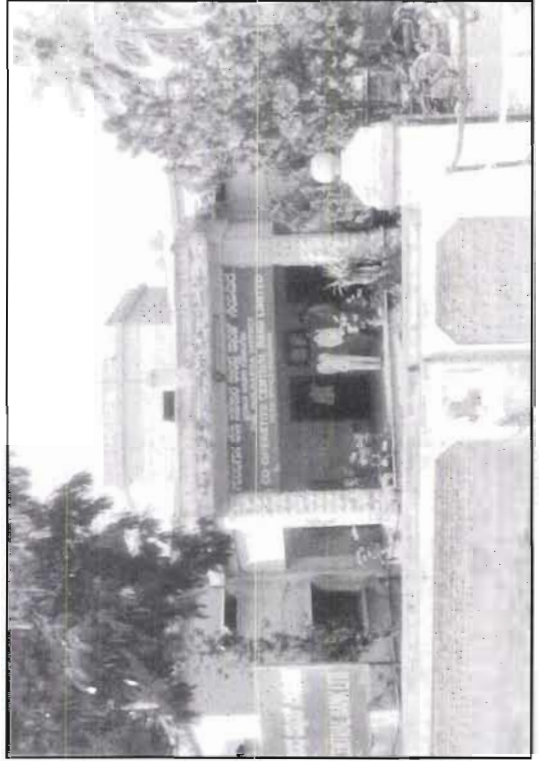
Bridge across the Kagina river, near Malkhed



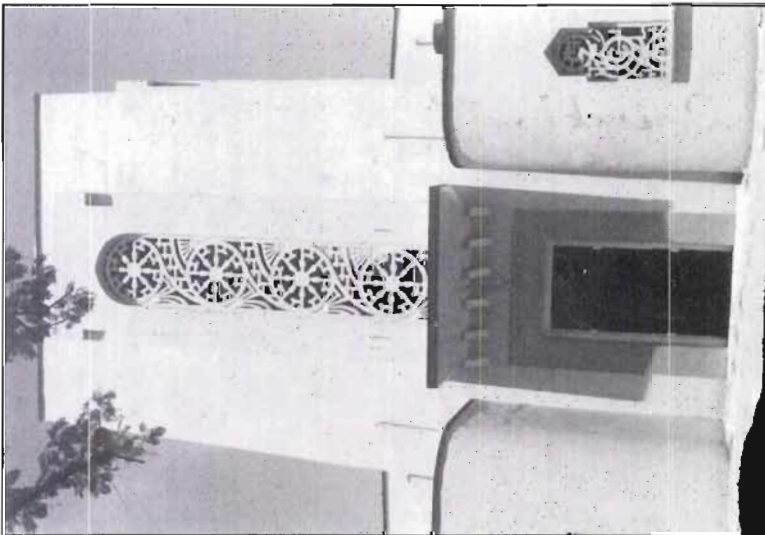
Ferry Transport, Naraboli



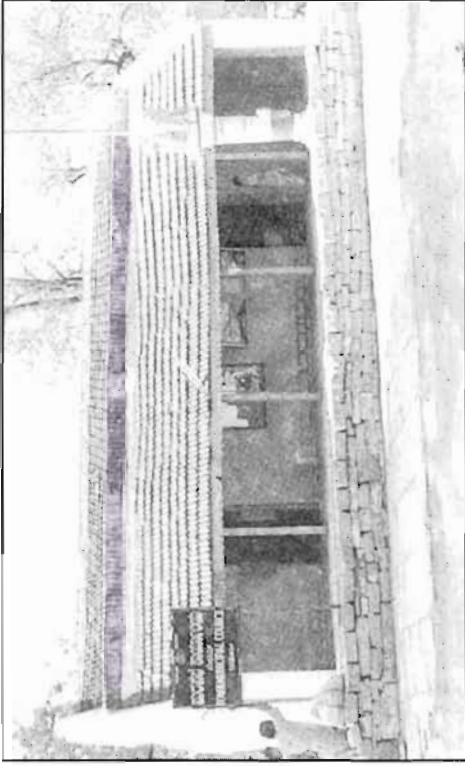
P.D.A. Engineering College, Gulbarga



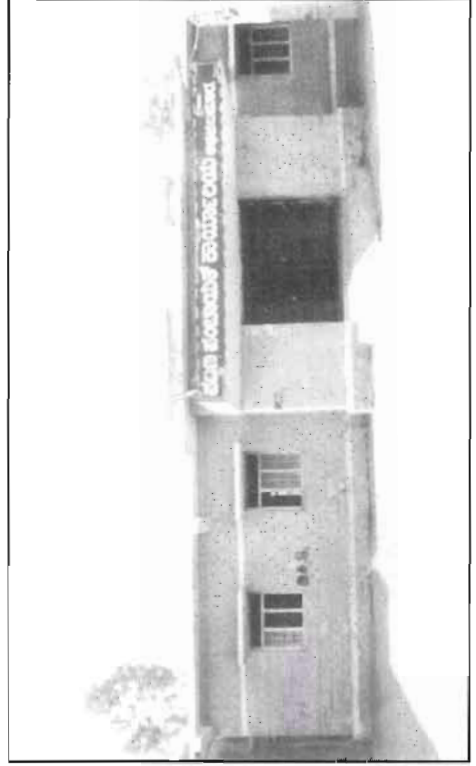
G.D.C.C. Bank, Gulbarga



Indira Smarak Bhavan (Town Hall), Gulbarga



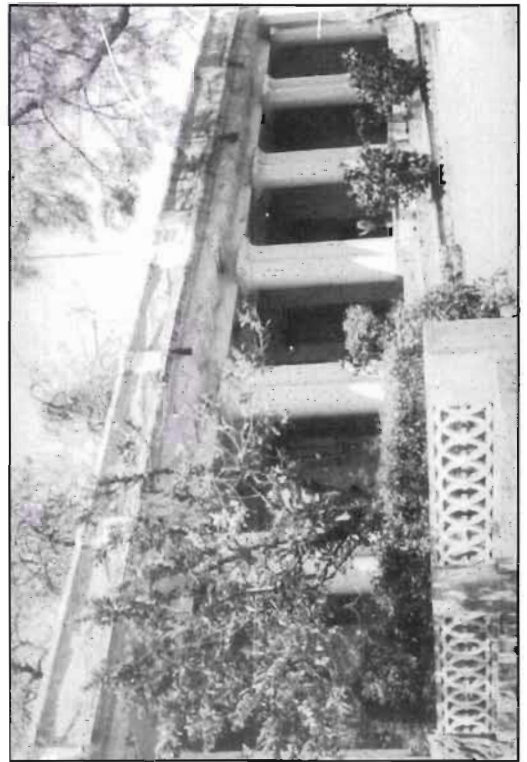
Town Municipal Council, Sedam



Taluk Panchayat Office, Afzalpur

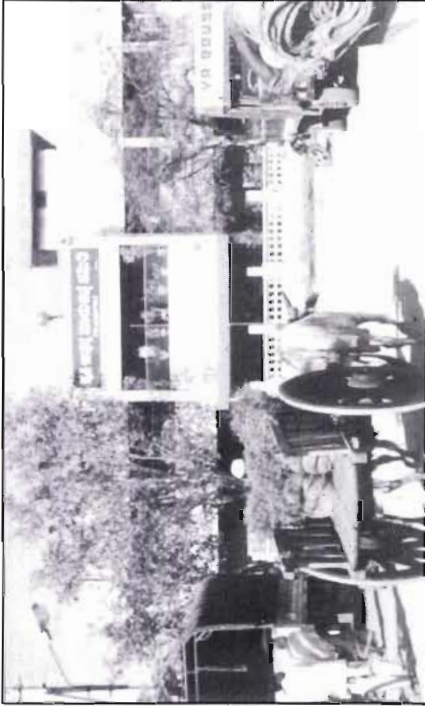


Town Municipal Council, Shahabad

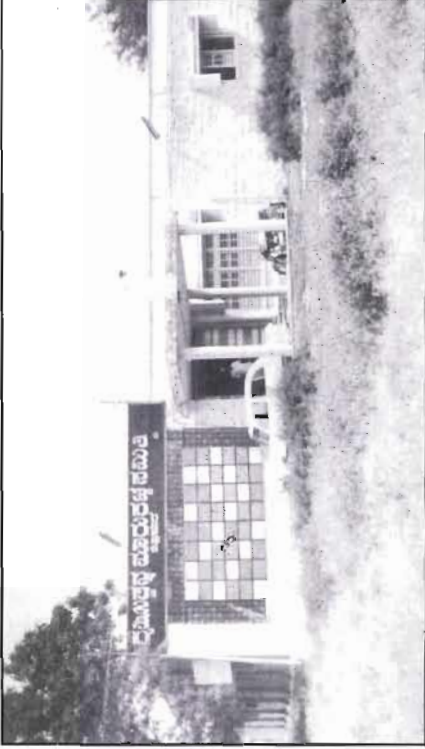


Town Municipal Council, Aland

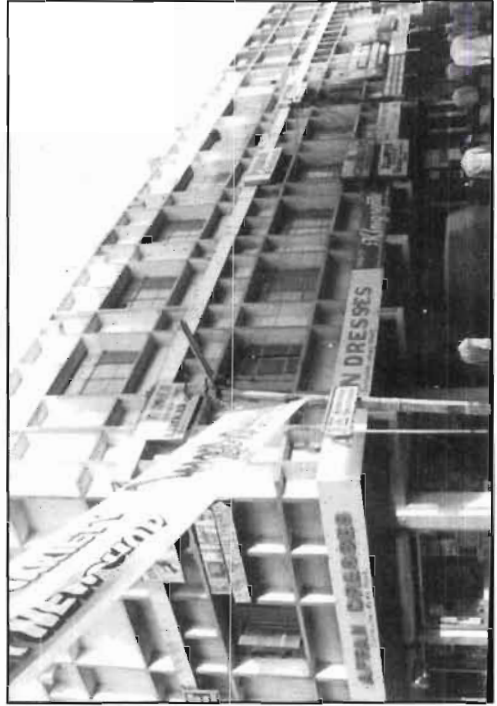




Agricultural Produce Marketing Committee, Gulbarga



Agricultural Produce Marketing Committee, Chitapur



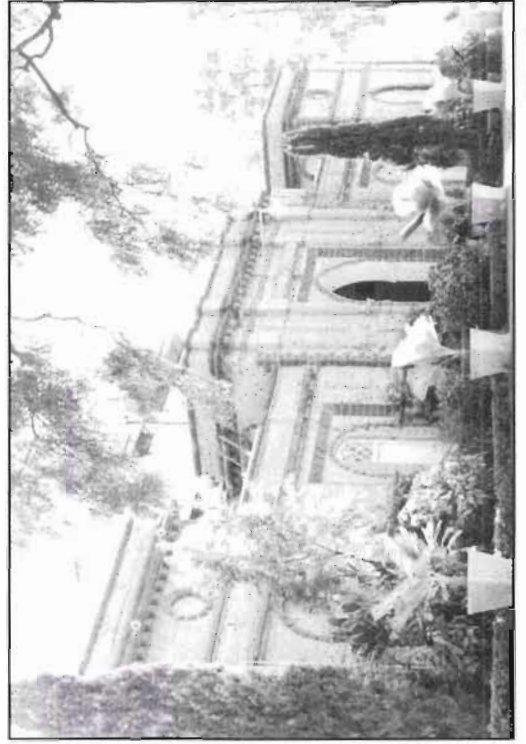
Super Market Complex, Gulbarga



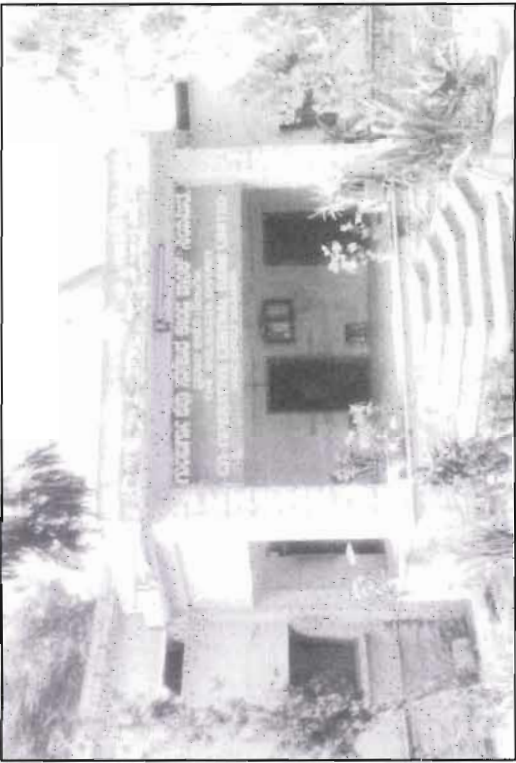
Betel Leaf Export, Degalamad;



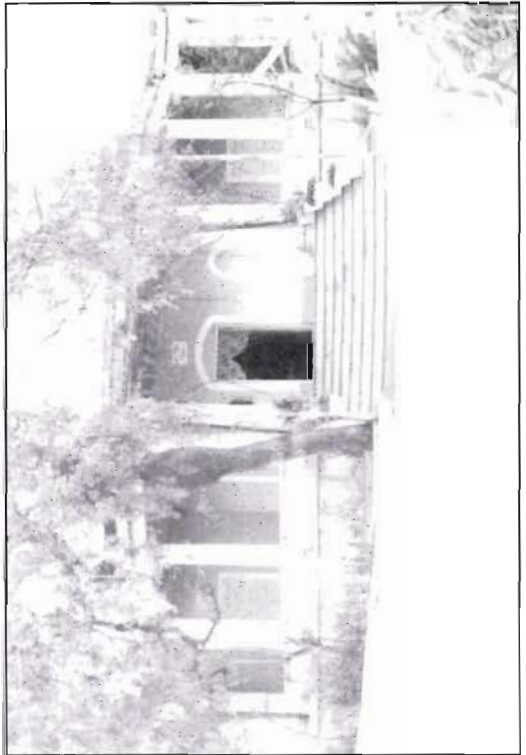
Abhividdhi Mahila Co-operative Bank, Gulbarga



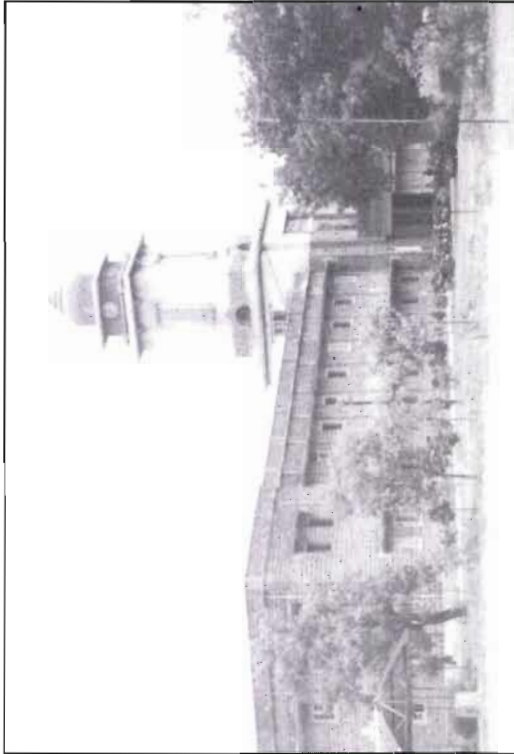
Iwan Shahi Tourist Bungalow, Gulbarga



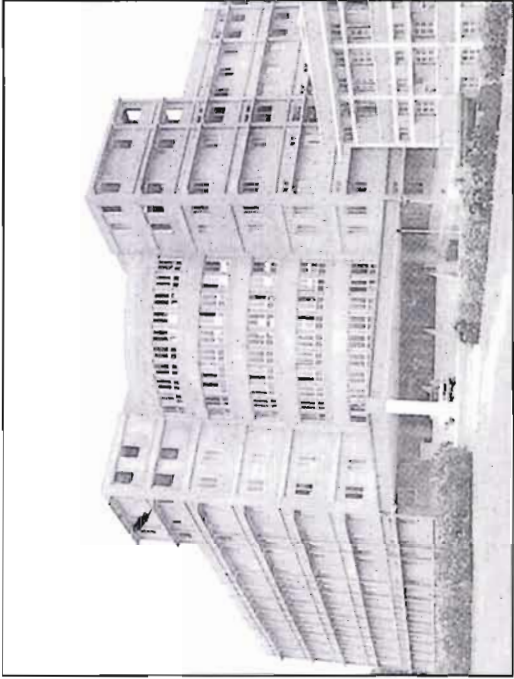
District Co-operative Central Bank, Gulbarga



Meadows Taylor's Bungalow, Surapur



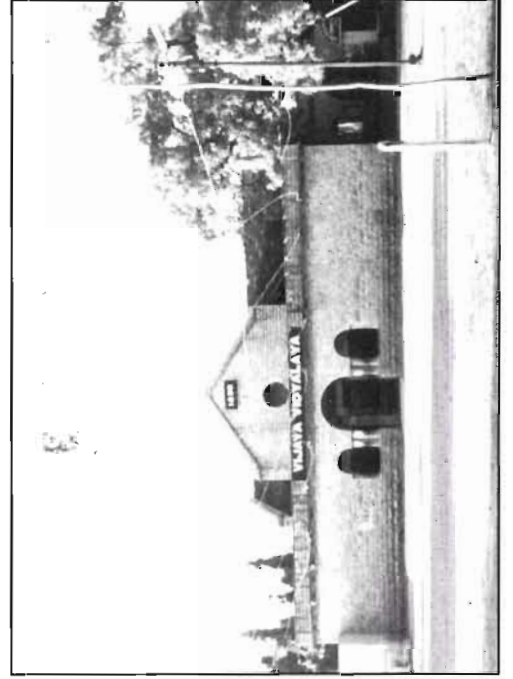
Shri Doddappa Appa Engineering College, Gulbarga



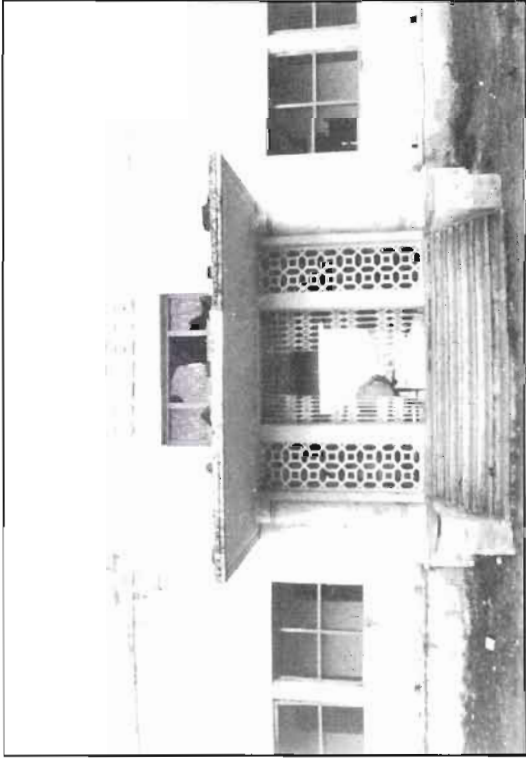
Basaveshwara Medical College & Hospital Gulbarga



Nutana Vidyalaya (Pre-University College), Gulbarga



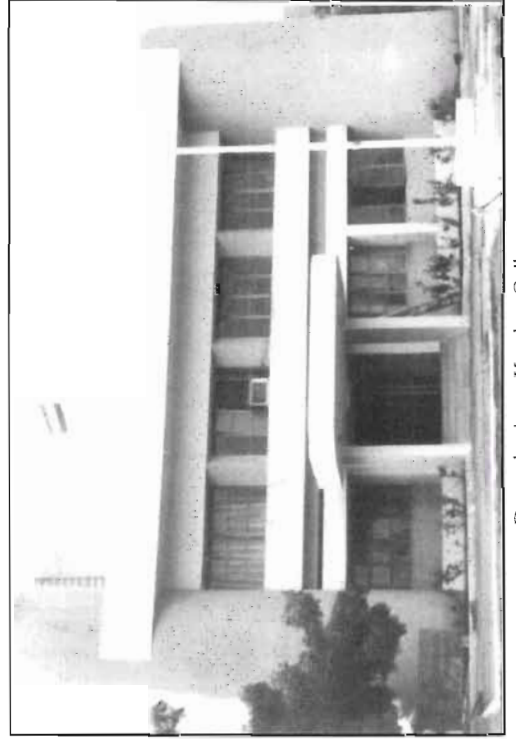
Vijaya Vidyalaya, College, Gulbarga



B.Ed., College, Gulbarga



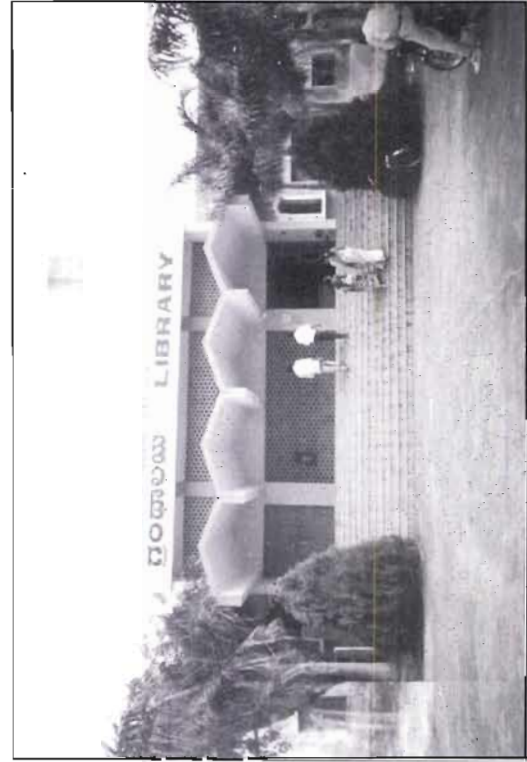
Smt. Channamma Basappa Patil Arts & Commerce College, Chincholi



Dooradarshana Kendra, Gulbarga



Marathi Sahitya Mandal, Gulbarga



University Library, Gulbarga



City Central Library, Gulbarga



Sri Chandrashekara Patil Stadium, Gulbarga



Kannada Adhyayana Samsthe, Gulbarga



Sri Sharanabasaveshwara Arts, Commerce & Science College, Gulbarga



Kalaniketana Arts College, Gulbarga



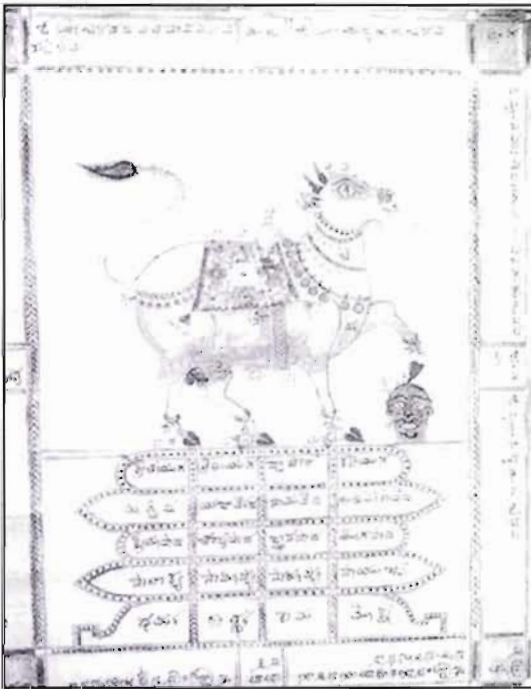
Railway Station, Gulbarga



Old Newspaper, Gulbarga Samachara



Old Newspaper, Khairu Khaha Deccan



An Illustration from Uddarane Vachana



Line drawing from an old Manuscript (L.K. Pattanakar Collections)



Entrance Tower, Chandralamba Temple, Sannati

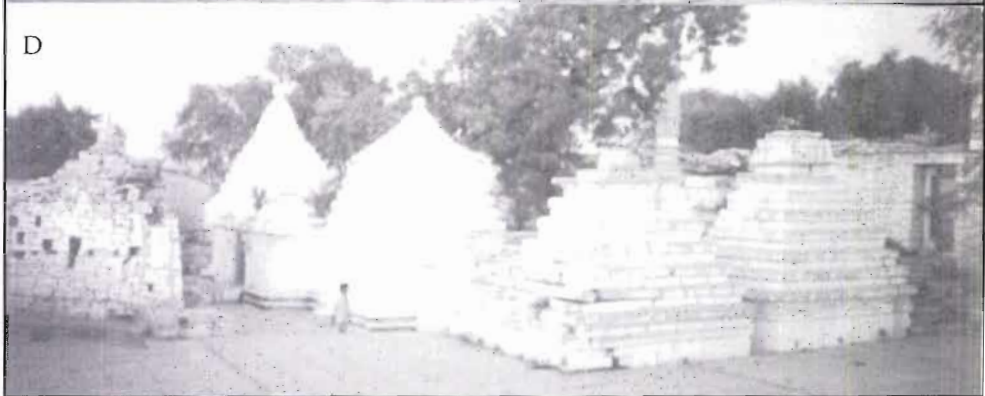
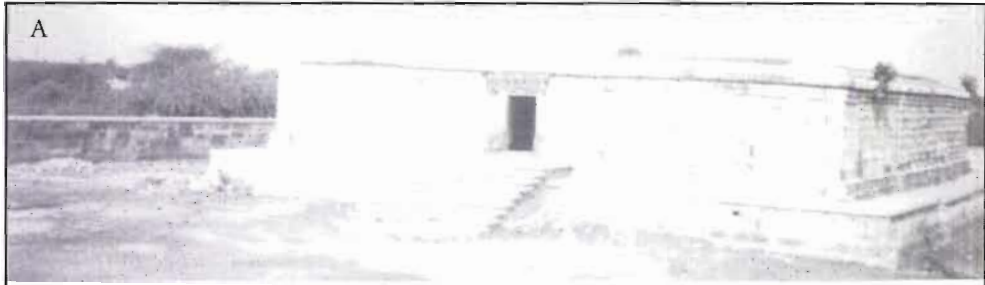


Chandralamba Temple, Back view



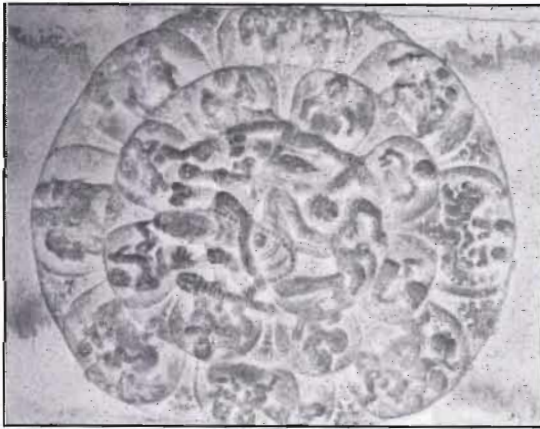
Goddess Chandralamba, Sannati



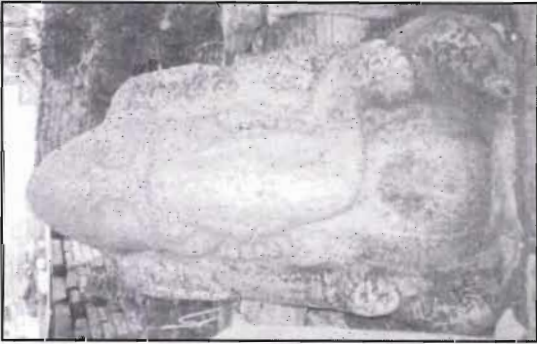


A. Traipurusha Ghatikasthan Nagavi  
C. Hanumantha Temple, Nagavi

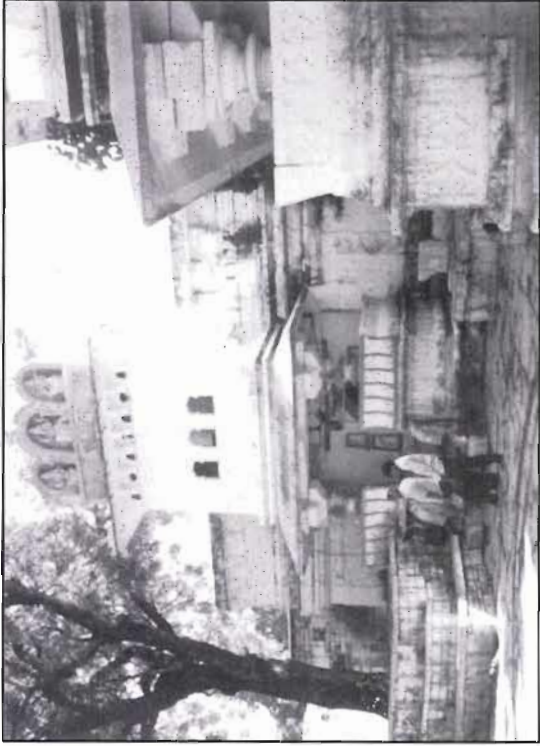
B. Madhusudhana Temple (?) Nagavi  
D. Rameshwara Temple Complex, Kolluru



Nataraja in the Ceiling, Shirwala



Ganapathi with two Hands, Shirwala



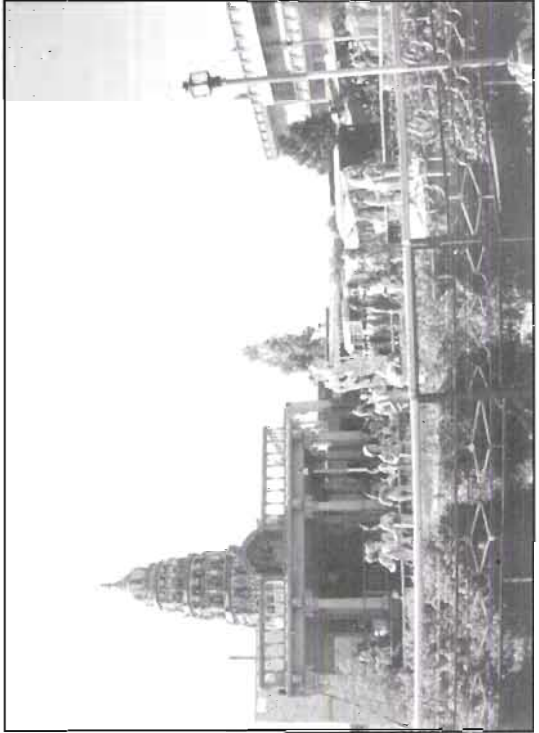
Siddhalingeswara Temple, Shirwala



Nannaiah - Nagaiyah Temple, Shirwala



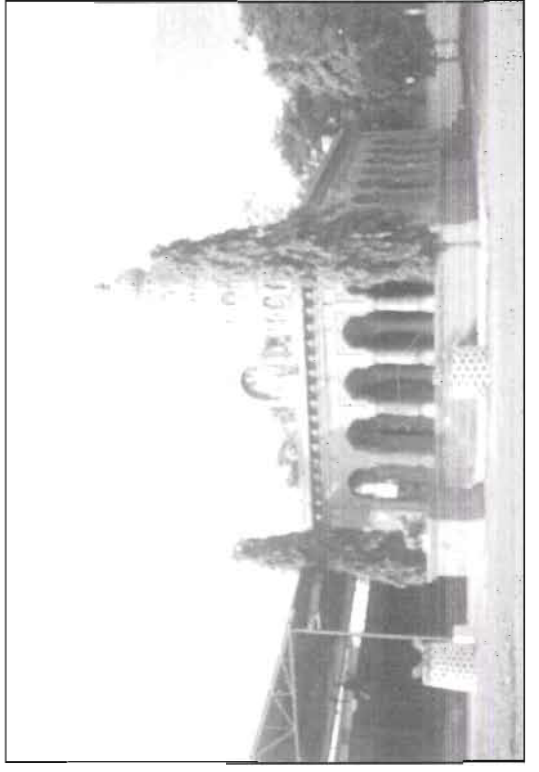
Maruthi Temple, Bhimaranagudi



Yallappa Maharaja (Avadhuta) Matha, Jidaga



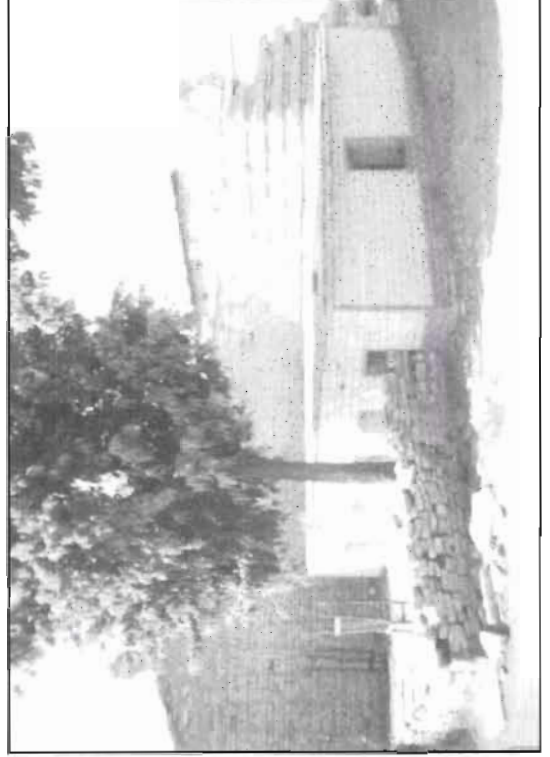
Jaina Sculptures, Jaina Basadi, Malkhed



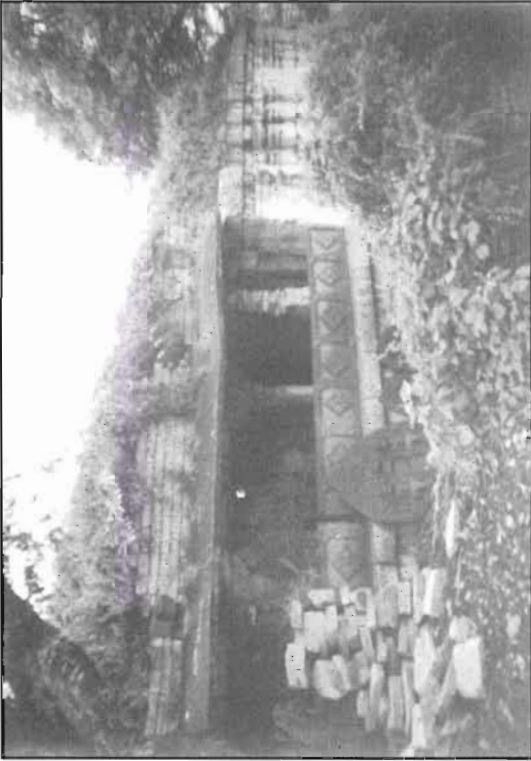
Sharanabasaveshwara Temple, Nimbargi



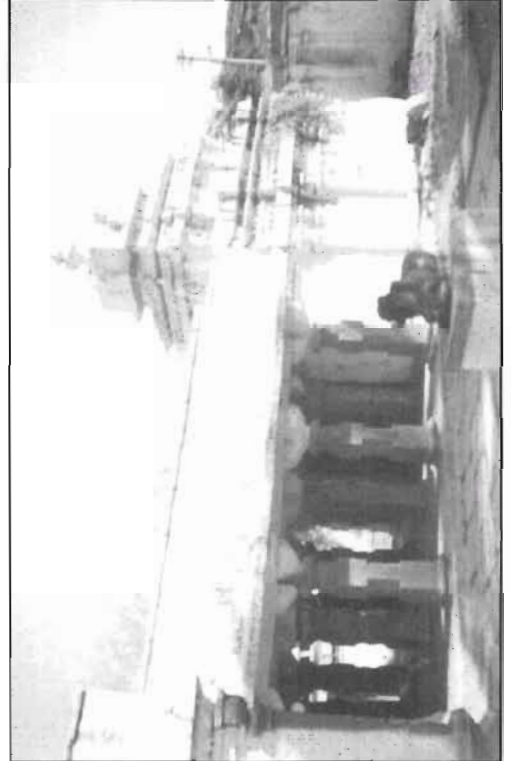
Chaya Bhagavathi Temple, Chaya Bhagavathi



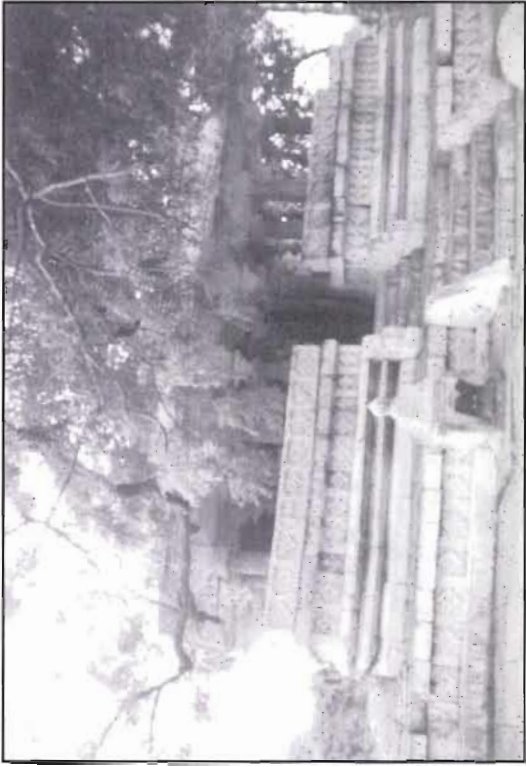
Kalikadevi Temple, Nidagundi



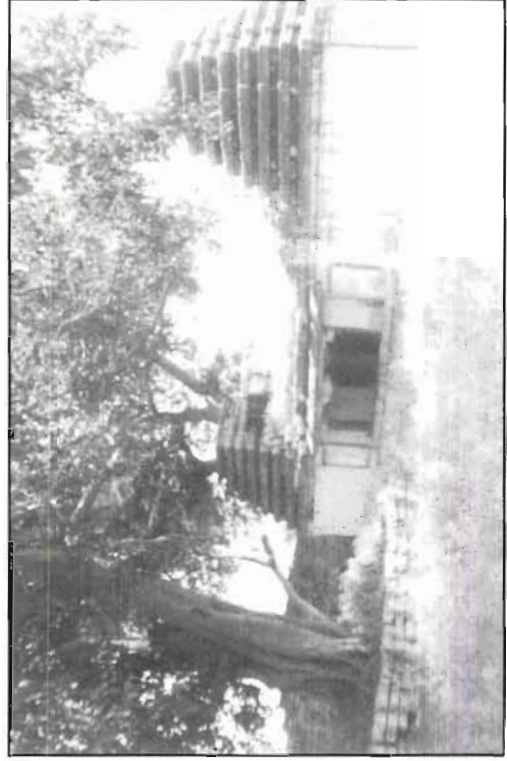
Jaina Temple, Ingalgi



Navanarayana Temple, Nidagundi



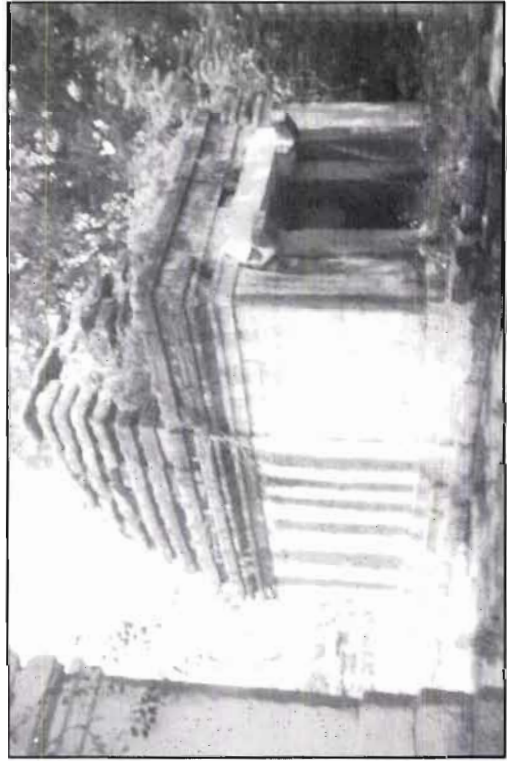
Aneshwara Temple, Handarki

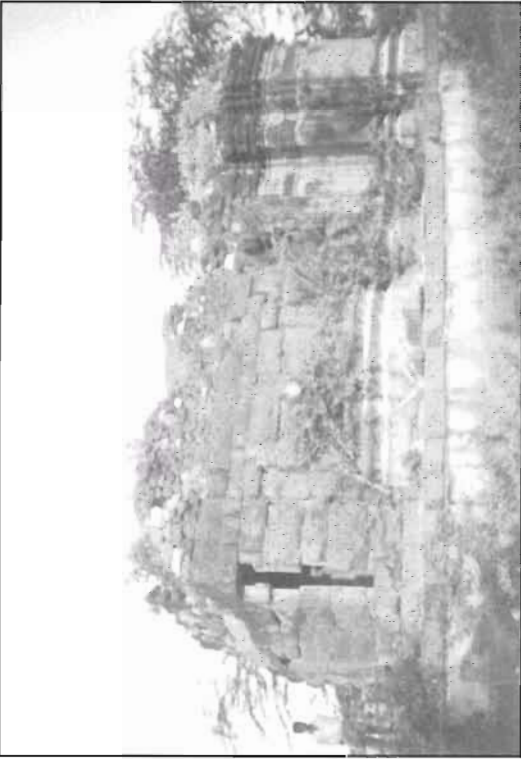


Shambhulingeshwara Temple Complex, Diggaon



Panchalingeshwara Temple Complex, Sedam

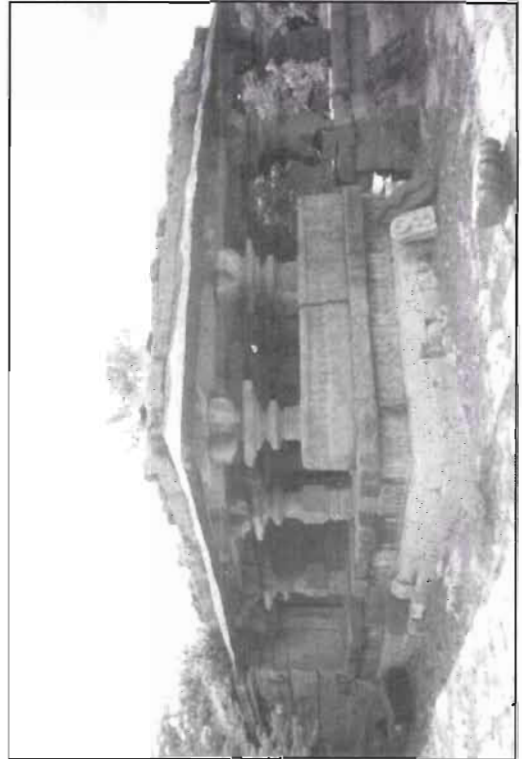




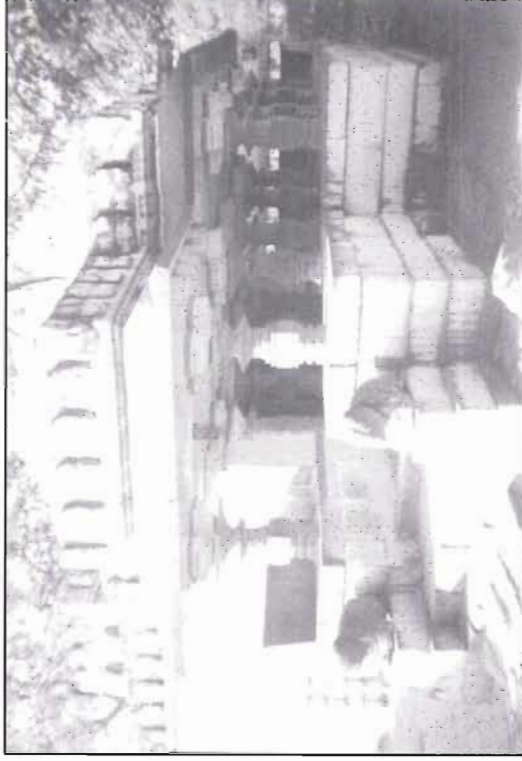
Shantinatha Basadi, Yevur



Trikuta Temple, Ruins Nimbargi



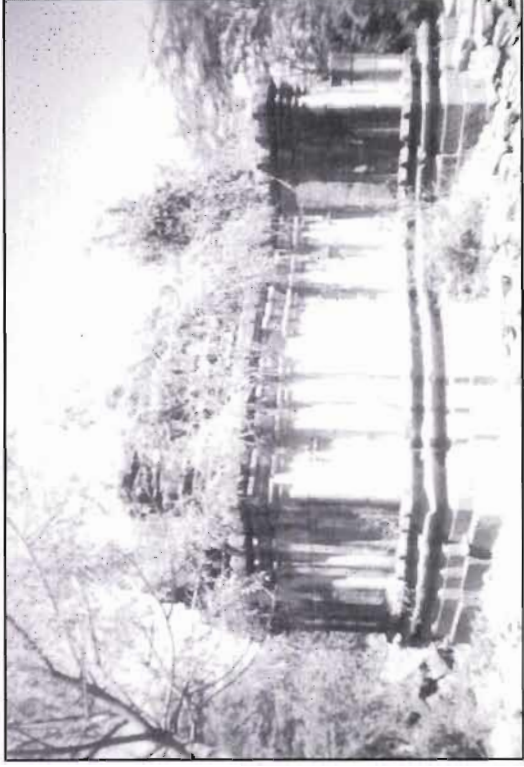
Bhimeshwara Temple, Hagaragi



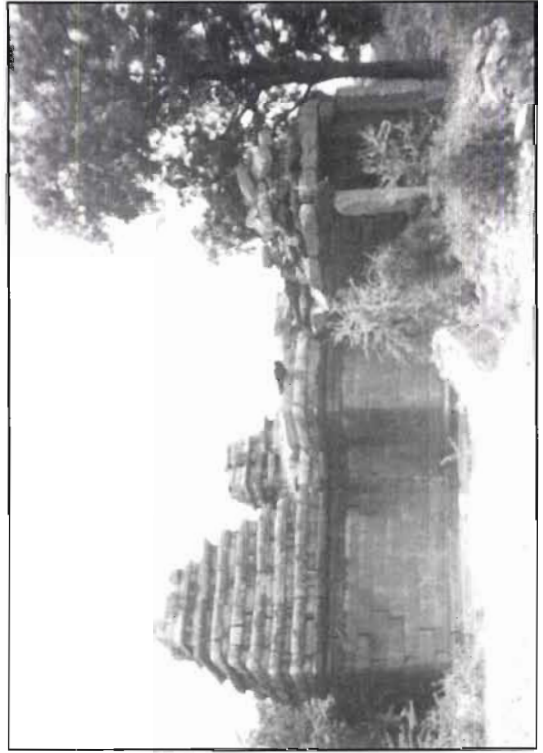
Ishwara Temple, Nimbargi



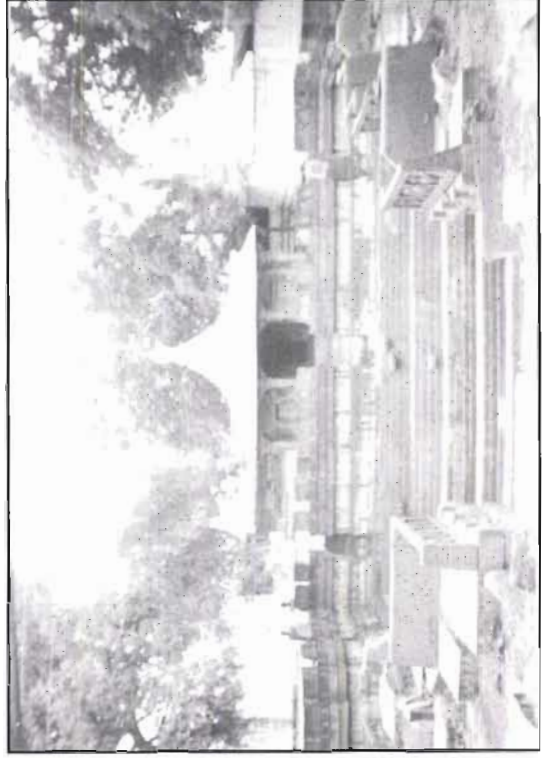
Nageshwara Temple, Kulageri



Ruined Temple, Sulepete



Murukalada Gudi, Hagarargi



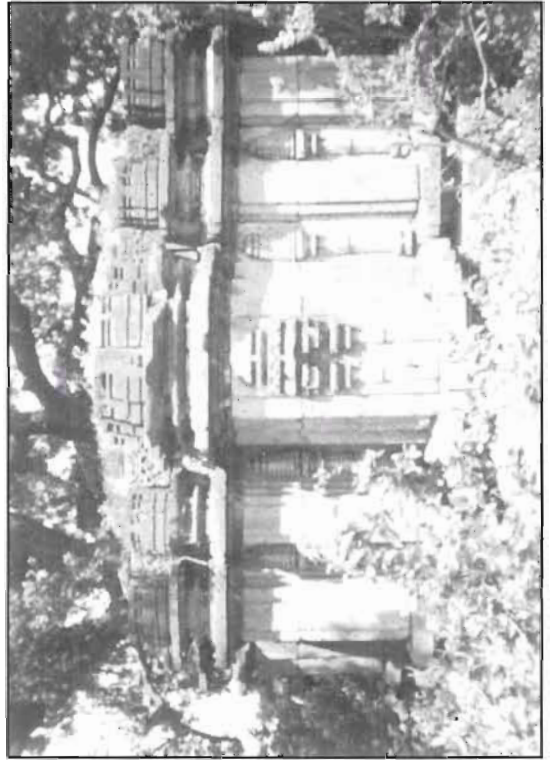
Bhavi Basavanna Temple, Yevur



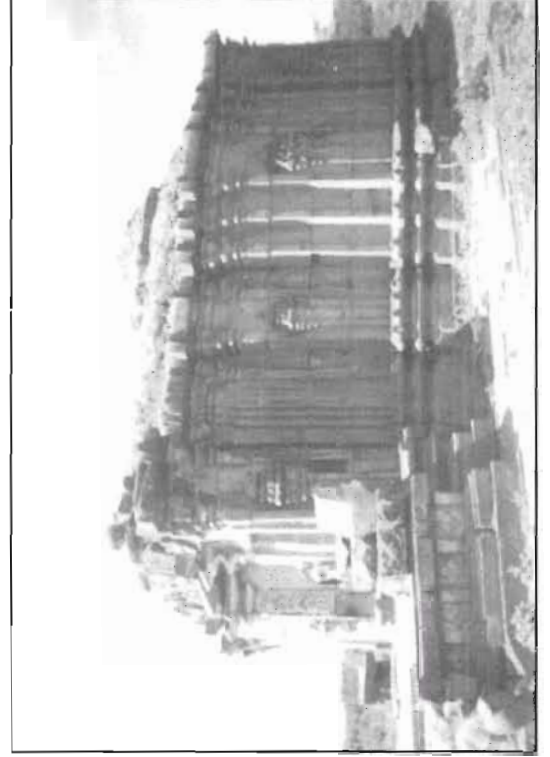
Buddha's Sculpture ? on the wall of Hanumanta Temple, Yevur



Sahasralinga Temple, Arakeri

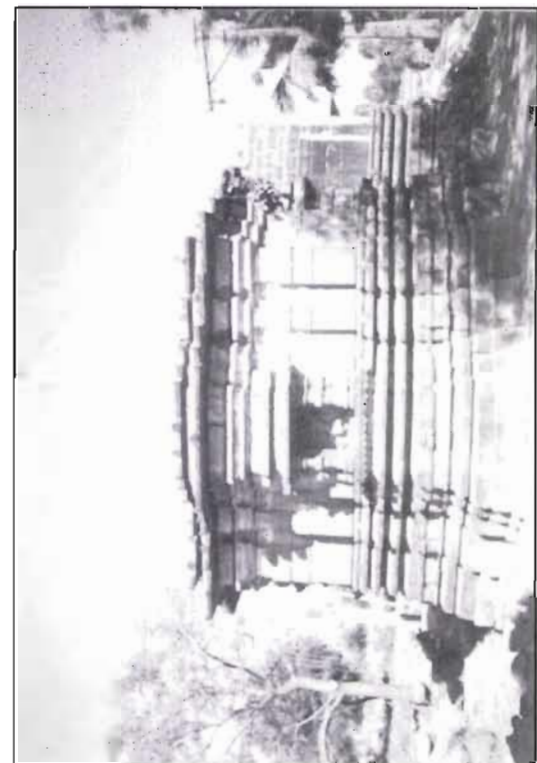


Bharatalingeshwara Temple, Sonna

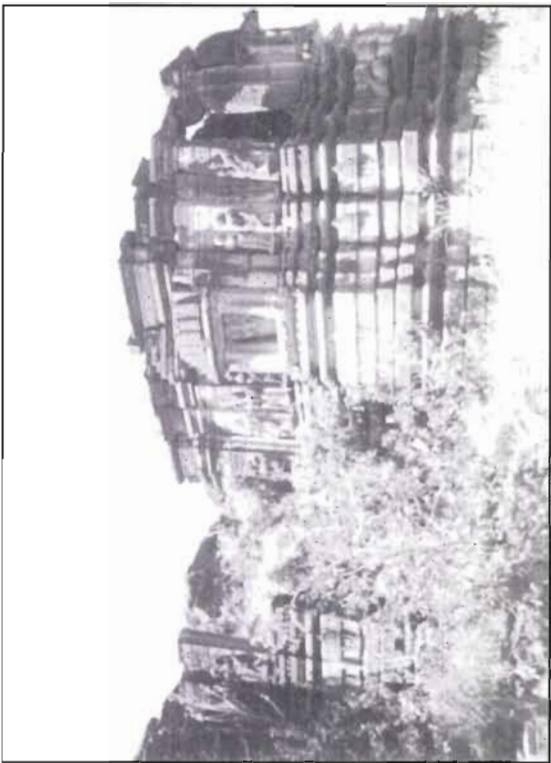


Dayimeshwara Temple, Wadageri

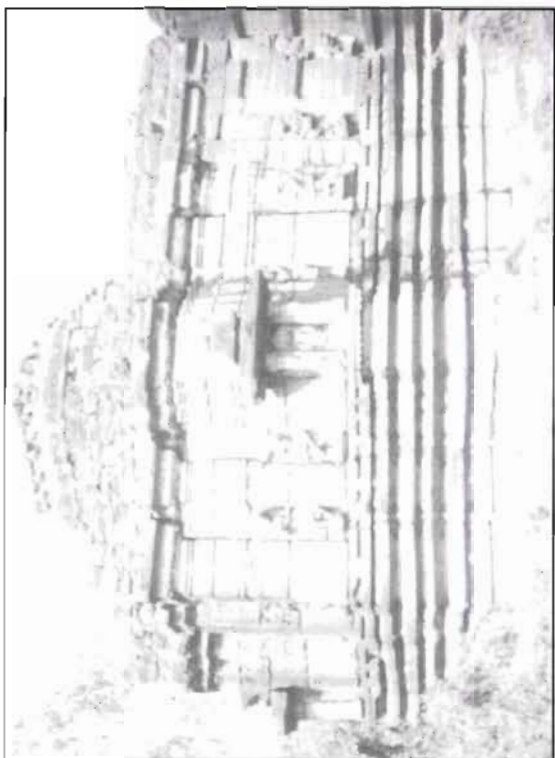




Someshwara Temple Chengta



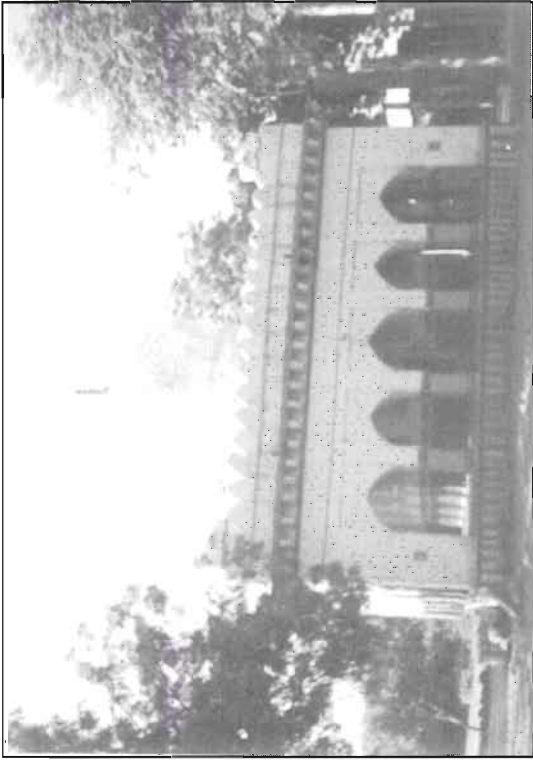
Kanidevara gudi, Kalagi



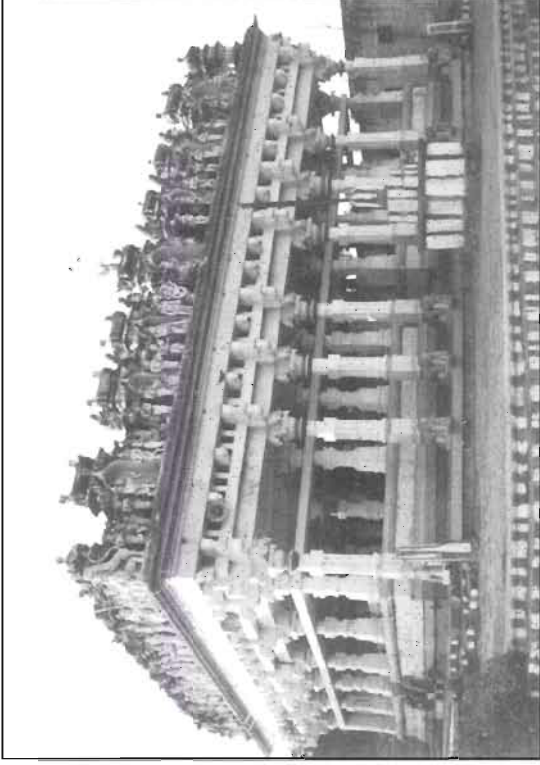
Maheshwara Temple, Chinchanasur



Temple ruins, Fort, Gulbarga



Basaveshwara Temple, Athanur



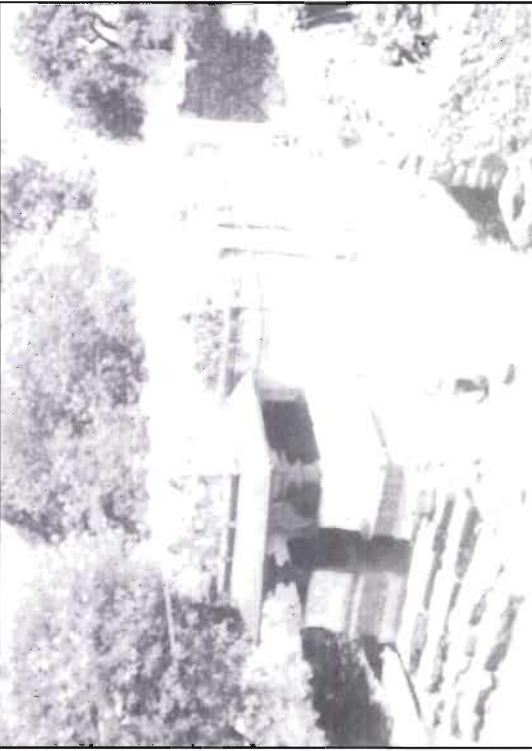
Gopalakrishna Temple, Surapur



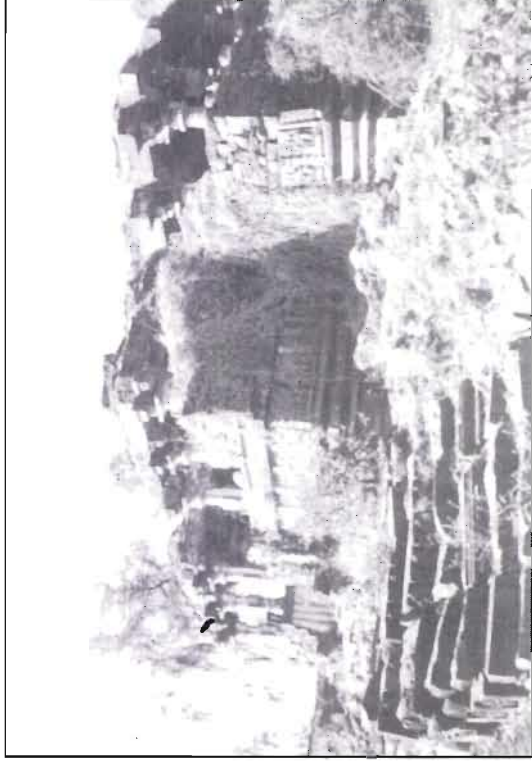
Yallamma Temple, Nagavi



Shanmukha Shivayogi Murti, Jevargi



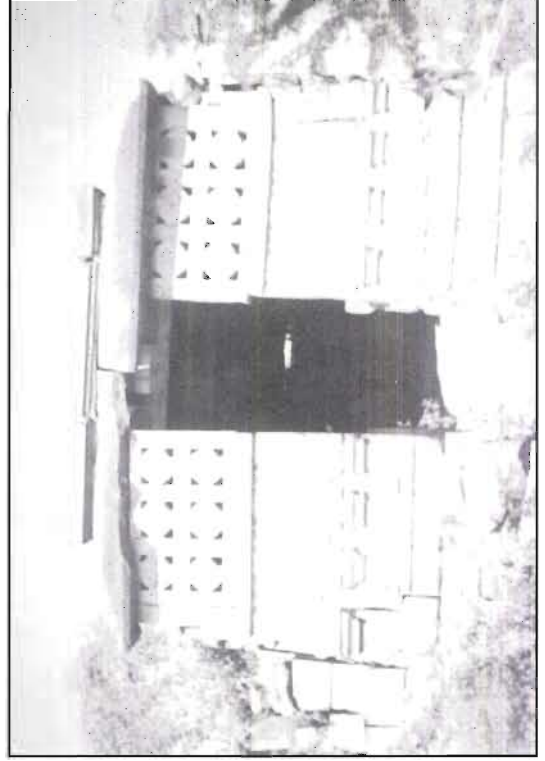
Shankaralinga Temple, Koganuru



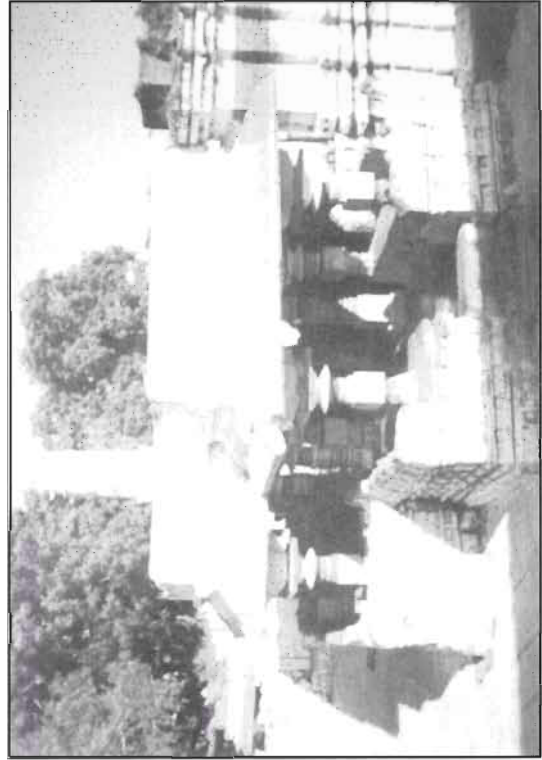
Neelakanteshwara Temple, Rummanagud



Ramalingeshwara Temple Complex, Hodala



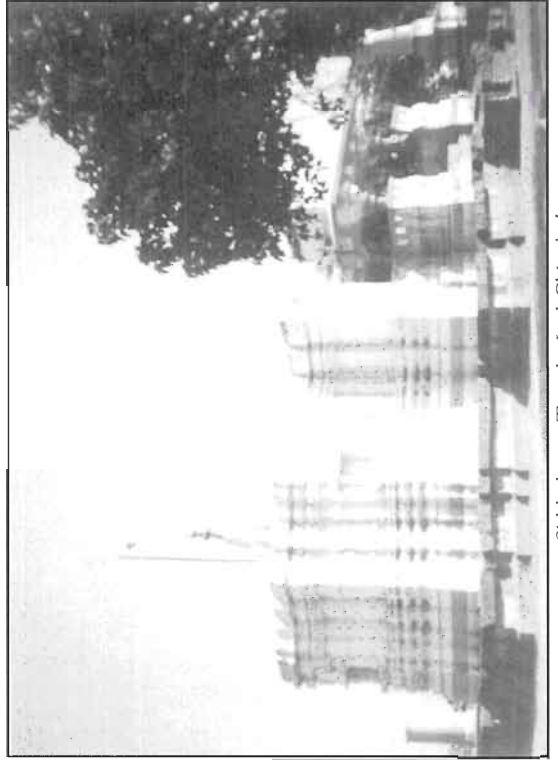
Degula, Shirasgi, Afzalpur



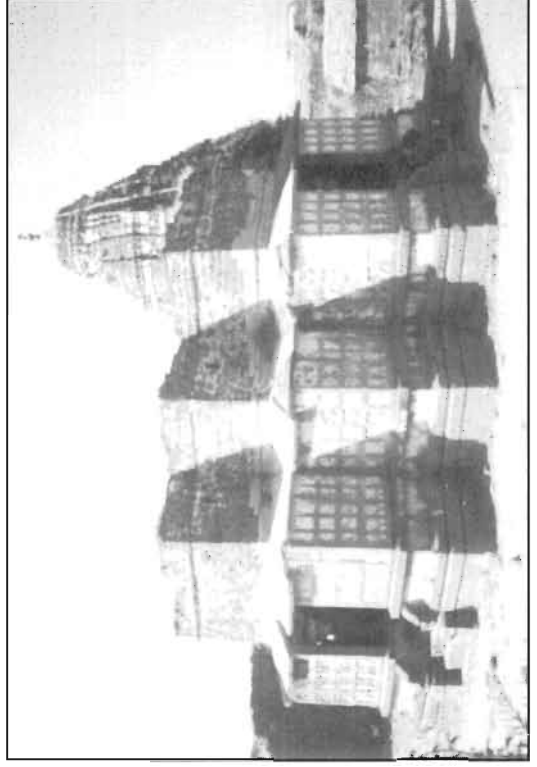
Mallikarjuna Temple, Chinmali



Mallikarjuna Temple, Sumbada



Siddeshwara Temple, Lad Chinchol



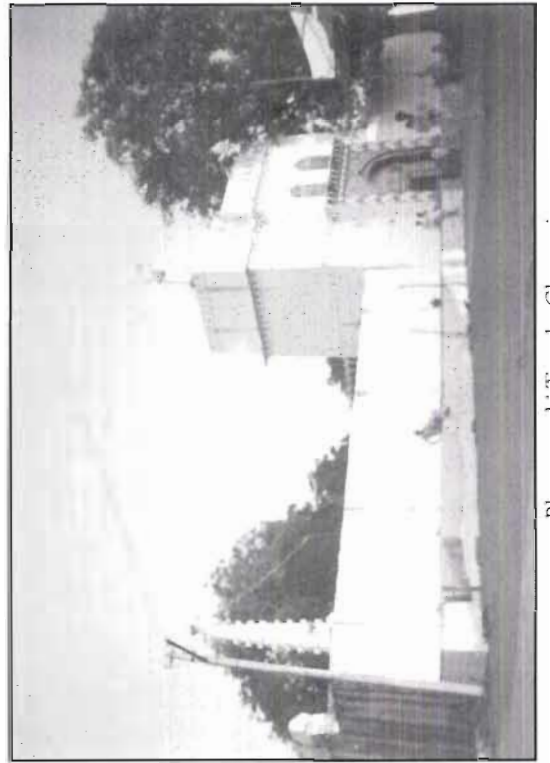
Bankanatha Temple, Ratkal



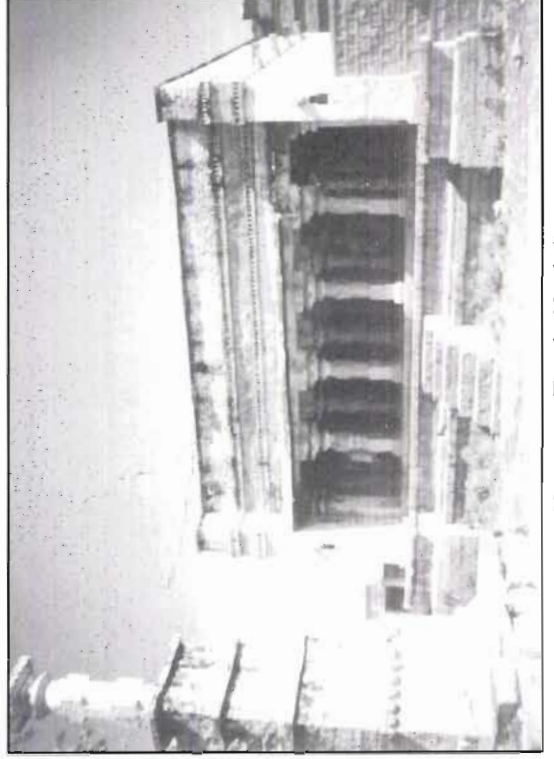
Yalabhavi Templ Mashal



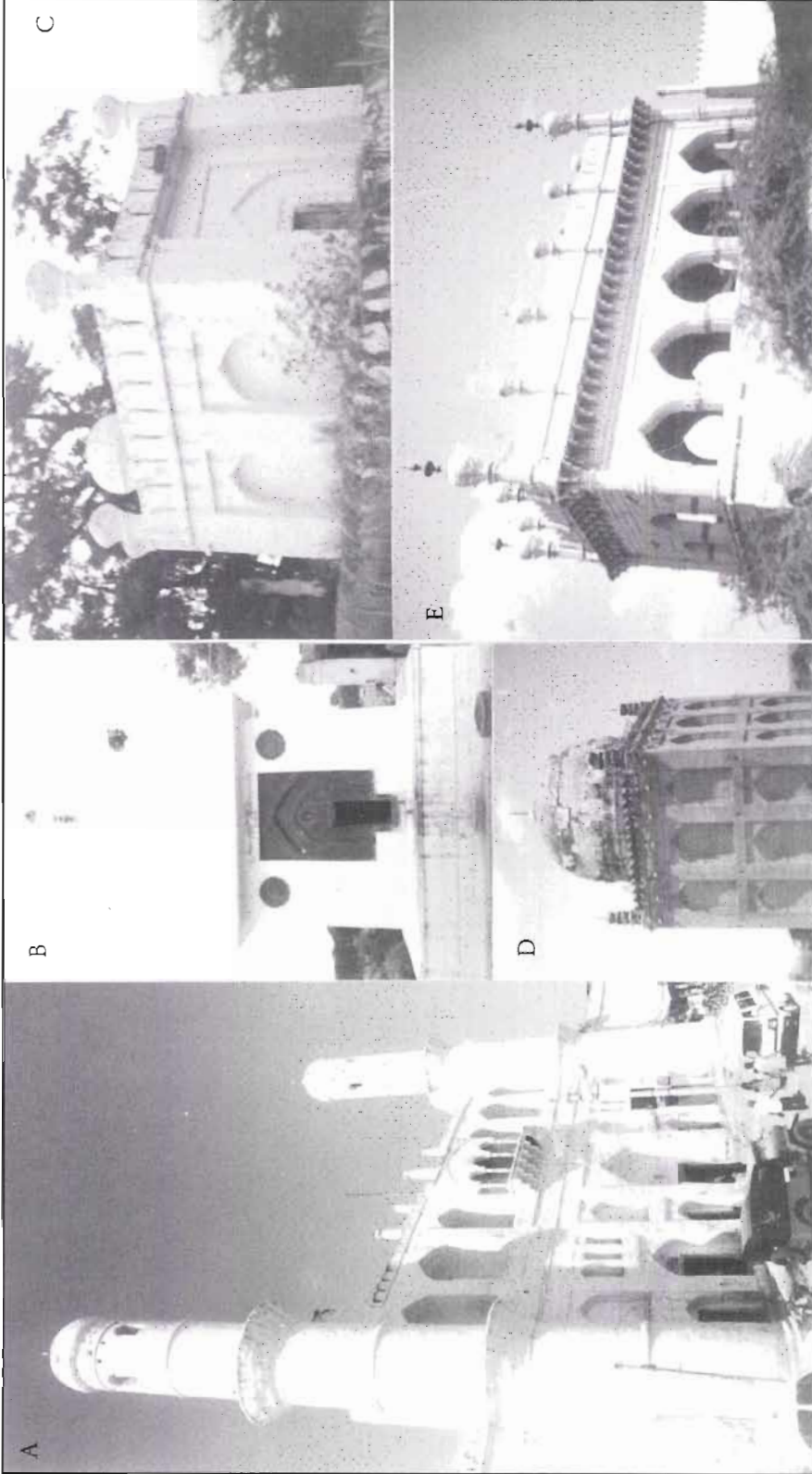
Ramathirtha, Yadrami



Bhagyavanthi Temple, Ghatargi



Hanumanta Temple, Naraboli



a) Old structure near Bande Nawaz Dargah, Gulbarga, b) Shalal Peer Dargah, Agni c) Shivappaiah Dargah, Jamakhand d) Gumbaz, Mahal Roza e) Baradari Gogi



Jaytirtha's Vrindavana, Malkhed



Vrindavana, Yaragola



Dattatreya Temple, Devara Ganagapura



Methodist Church, Gulbarga



Methodist Church, Surapur